

OLYMPUS

EVIS EXERA III

EVIS EXERA III Bronchoscope

BF-P190

Fully rotatable diagnostic bronchoscope with a crisp, high-resolution image in a slim design for small, distal airways.



BF-P190



The fully rotatable, slim design of the BF-P190 bronchoscope, powered by EVIS EXERA III, along with its additional tip angulation, advances maneuverability to provide better access in small, distal airways.

Advancing Maneuverability

With outstanding handling and unmatched tracheobronchial access

- Rotary Function:** Insertion tube rotation of up to 120° left and right may effectively reduce hand rotation* and supports easier insertion and positioning of endoscopic devices.
- 210° Tip Angulation:** The wide angulation range can be maintained even when an endoscopic device is inserted, making it easier to access difficult-to-reach peripheral areas of the lung.
- Extended Reach:** The Olympus Guide Sheath Kit helps to improve access to peripheral lesions by acting as an extension of the bronchoscope's working channel. When used with proprietary Olympus radial EBUS probes, real-time confirmation of the lesion location can assist in targeted sampling to improve the diagnostic yield.



- Waterproof One-touch Connector:** A simple one-touch connector minimizes the effort required for set up, and its fully submersible design eliminates the need for a water-resistant cap.

*When compared to the BF-180 series.

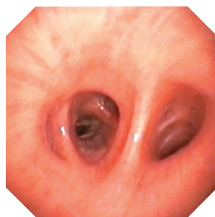
Advancing Visualization

With improved visualization, for clearer, brighter imaging

- High-resolution Image:** Revolutionary mini CCD on the scope tip provides unsurpassed image quality compared to any other commercially available slim bronchoscope.
- Electronic Magnification:** Close-up observation of bronchial surfaces is readily available with 1.2 x and 1.5 x electronic magnification.
- Narrow Band Imaging (NBI):** Now significantly brighter compared to previous generation scopes, NBI provides twice the viewable distance for enhanced visualization of vascular structures and mucosal morphology.



Previous Model BF-MP160F



Current Model BF-P190

Advancing Versatility

With compatibility across multiple specialties

- EVIS EXERA III:** The power of EVIS EXERA III expands across the hospital to enable equipment standardization and simplified support and service, with the ultimate goal of lowering the total cost of equipment ownership.
- Endoscopic Devices:** A full array of Olympus bronchoscopy devices is available and designed to deliver superior performance while minimizing channel damage, thereby potentially reducing repair costs and extending endoscope life.

Specifications

Optical System	Field of View	110°
	Direction of View	Forward Viewing
	Depth of Field	2 to 50 mm
	Image Quality	SDTV
Insertion Tube	Distal End Outer Diameter	4.2 mm
	Distal End Enlarged	
	Insertion Tube Outer Diameter	4.1 mm
	Working Length	600 mm
	Rotary Function	Yes
Instrument Channel	Channel Inner Diameter	2.0 mm
	Minimum Visible Length	3.0 mm from the distal end
	Direction from which endoscopic devices enter and exit the endoscopic image	
Bending Section	Angulation	
Total Length	880 mm	
Electrocautery Instrument Compatibility	Yes	
Laser Compatibility	No	
Autoclave Compatibility	No	
Compatible EVIS EXERA System	Video System Center	Olympus CV-190
	Xenon Light Source	Olympus CLV-190

Olympus is a registered trademark of Olympus Corporation, Olympus America Inc., and/or their affiliates. | Medical devices listed may not be available for sale in all countries.